



# NATIONAL CONSTRUCTION SUMMIT 2024

April 18<sup>th</sup> 2024, Sport Ireland Campus, Blanchardstown

In Partnership With



ela[container]



Polish Investment & Trade Agency  
PFR Group

Portakabin®

allied.ie



Flanagan Fittings

FAILTE SOLAR  
- GO GREEN GO SOLAR -



POWERWASHING IRELAND

OPENSOURCE

VITRINTEC®  
wall solutions

SALTO  
inspiredaccess

Keniry Advisory Services

Free WiFi: Event Org: uGdvn93J

www.nationalconstructions summit.ie

in National Construction Summit

@ConstructSummit #ConstructIRE

# Main Stage - The National Construction Summit

## The National Construction Summit

| Times       | Name  | Topic   |
|-------------|---|---|
| 9.55-10.00  | David Keniry, Keniry Advisory Services  | Opening Remarks   |
| 10.00-10.30 | <b>Fireside Chat:</b><br>Johanna Murphy, Estate Agent, Johanna Murphy & Sons and Carol Tallon, Director, Property District  | Solving Ireland's Housing Step by Step  |
| 10.40-11.20 | <b>Moderator:</b> Lara Oyedele, CEO, Lara Homes Ltd & Black on Board Ltd<br><b>Panellists:</b> Róisín Fitzpatrick, Immigration Partner, Deloitte Ireland, Ciara Whyte, Fundraising Partnerships Ireland, Movember Charity & Mark Whitehead, Construction Director, CPAC Modular   | Building a Resilient Workforce: Attracting and Retaining Skilled Construction Talent    |
| 11.20-11.40 | <b>COFFEE BREAK &amp; NETWORKING</b>  |   |
| 11.40-12.00 | Dr. Karl Crowley, IKON Strategic Initiatives and Partnerships Manager, Kingspan Group   | The road to Lower Embodied Carbon / Circularity in the construction industry            |
| 12.00-12.40 | <b>Moderator:</b> Carol Tallon, Director, Property District<br><b>Panellists:</b> Tony McLoughlin, Managing Director of Planning, Design, Manufacturing, and Operations, Glenveagh Fireside, Ger Fahey, Head of Commercial Ireland & UK, Remagin, Pat Kirwan, Director, C+W O'Brien Architects, Eoin Waldron, General Manager, Castle Modular, Ronan Lonergan, Design Lead, Cairn Homes PLC & Dick Clerkin, Managing Director, Clerkin Consulting | Voices of the Irelands MMC Sector: Priorities and Perspectives for a Sustainable Future |
| 12.40-12.55 | <b>COFFEE BREAK &amp; NETWORKING</b>  |   |
| 12.55-13.00 | David Keniry, Keniry Advisory Services  | Afternoon Remarks   |
| 13.00-13.20 | Darragh O'Brien TD, Minister for Housing, Local Government and Heritage of Ireland  | Ministerial Address   |
| 13.20-13.40 | Emily Maguire, Director, Covolve  | Sharing the Advantage: The transition to digital construction                           |
| 13.40-14.20 | <b>Moderator:</b> Dave McAuley, Founder & CEO, Bitpower.ie<br><b>Panellists:</b> Garry Connolly, Founder & CEO, Host in Ireland, Mark Varian, Head of Projects and Construction, Eversheds Sutherland, Gary Watson, Country Manager Ireland, Keppel DC & Maurice Mortell, Non Executive Director, Ethos Engineering   | Is Ireland Destined to Become a Secondary Data Hosting Location?                        |
| 14.20-14.40 | Eamonn Halpin, Sector Head (Financial Advisory), National Development Finance Agency  | Presentation from the NDFA  |
| 14.40-15.20 | <b>Moderator:</b> Gillian Hegarty, Senior Manager, Capital Projects and Infrastructure, PwC<br><b>Panellists:</b> Mila Lopez Simon, Managing Director – UK and Ireland, Invesis, Simone Mendonça, Senior Project Manager, Bechtel & Aine Walsh, Independent Consultant  | How PPPs can help meet Ireland's infrastructure challenges                              |
| 15.20-15.25 | David Keniry, Keniry Advisory Services  | Closing Remarks   |



NATIONAL  
CONSTRUCTION  
SUMMIT 2024

In Partnership  
With



ela[container]



All presentations/timetables are subject to change. Please check with onsite event timetable on the day.

## About the Sponsors



### **Kingspan Group is delighted to support the 2024 National Construction Summit and look forward to meeting with industry colleagues at Ireland's largest construction industry event.**

Since our establishment in Ireland in the 1960s, we have grown into a global leader in high-performance insulation and building envelope solutions, employing more than 22,500 people and operating over 200 manufacturing sites in 80 countries.

Today we are organised around five operating divisions – Insulated Panels, Insulation, Data + Flooring, Light, Air + Water and Roofing + Waterproofing – which together make a range of high-performance products to help deliver sustainable buildings that are energy-efficient, optimise natural resources and promote the wellbeing of those who work, live and play in them.

Over the last decade, we have intensified our focus on working towards a net-zero emissions built environment, bringing new products and new initiatives to the market. Our efforts to decarbonise our product offering are spearheaded by Planet Passionate, our 10-year global sustainability programme that aims to tackle three big global challenges; climate change, circularity and protection of the natural world. The programme features ambitious, science-based targets that are aligned with a 1.5°C scenario.

In a bid to achieve net-zero carbon manufacturing by 2030, we have already achieved a 65% absolute reduction in our scope 1 and 2 emissions since 2020, and aim to reduce the carbon intensity of our primary supply-chain partners by 50% by 2030. We also have measurable targets on harvesting rainwater, eliminating waste to landfill, increasing use of recycled materials, and more.

The construction and buildings sector are responsible for almost 40% of carbon emissions and 30% of all waste generated, with the materials and construction phase of buildings responsible for 11% of all global energy-related carbon emissions.

We believe advanced material science and digitalisation hold the key to solving these challenges. We have focused our innovation on two main strategies: refining existing products with lower carbon alternatives, and exploring new bio-based materials and solutions.

Offering a full spectrum of insulation solutions that can meet the challenging requirements faced by the 21st century-built environment is core to our innovation

strategy. Central to this is IKON, our global innovation centre, dedicated to finding innovative solutions for sustainability, performance and efficiency in construction.

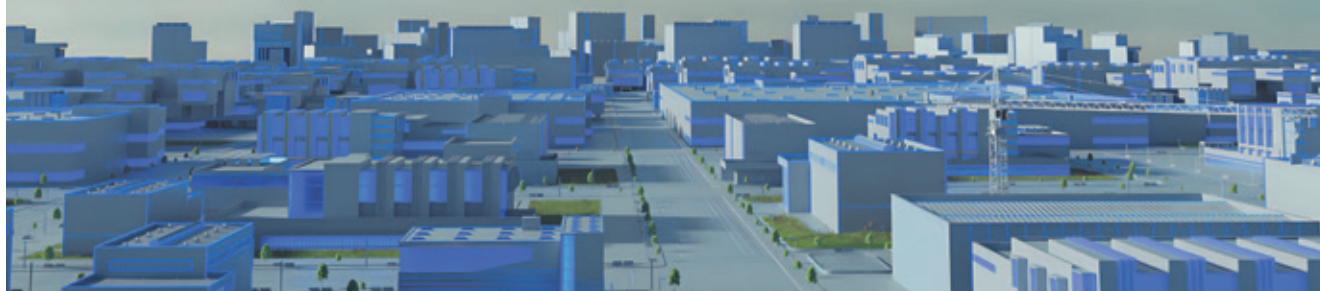
An example of our latest innovations is the recently launched new lower embodied carbon QuadCore LEC insulated panel - one of the highest performing insulation technologies in terms of thermal efficiency. Plus, we launched two further LEC products with RMG600+ our lowest ever embodied carbon raised access floor panel and Tate Grid LEC structural ceiling solution.

Last year we also unveiled HemKor, a product largely made of hemp, a fast-growing bio-based material, representing another of our product innovations as part of our strategy to provide a full-spectrum of insulation solutions. Furthermore, we launched AlphaCore, our first Euroclass A2s1d0 insulation product, offering a slim solution when compared with traditional Euroclass A-rated alternatives.

This demonstrates our commitment to further develop building envelope solutions that help minimise the carbon footprint of both existing and new buildings, or, as we say, to help make 'better buildings for a better world'.



**QuadCore™ LEC**  
LOWER EMBODIED CARBON SOLUTIONS



# Architecture, Design, Planning & Fit-Out

## Architecture, Design, Planning & Fit-Out

| Times       | Name  | Topic  |
|-------------|---|--|
| 9.55-10.00  | Paul O'Doherty, Journalist & Broadcaster  | Opening Remarks  |
| 10.00-10.20 | Henry Thompson, Director, OldBuilders Company   | Insulating historic buildings, moisture cold bridging issues     |
| 10.20-10.40 | Mark Mulville, Head of School of Surveying and Construction Innovation, TU Dublin   | Dwelling Overheating in Cool Climates: Key Factors in Ireland    |
| 10.40-11.00 | Niall McCarra, BSc., LEED AP BD+C - Retrofit Program Manager, Kingspan Insulation   | Designing for a Successful Building Retrofit                     |
| 11.00-11.20 | <b>COFFEE BREAK &amp; NETWORKING</b>  |  |
| 11.20-11.40 | Brian Cody, Architect, Buldeco OffSite Architecture   | Nordic Design in the Irish Landscape                             |
| 11.40-12.00 | Gretta Murphy, Commercial Sales & Project Co-Ordination, Graepels   | Elevating Architectural possibilities with Graepels Picture Perf |
| 12.00-12.20 | Amanda Hughes, Ergonomics Expert, Blum UK   | Ergonomics and the Age Explorer                                  |
| 12.20-12.40 | Angela Murphy, Design Director, AM Design   | Using restored buildings within multi-use developments           |
| 12.40-13.20 | <b>LUNCH &amp; NETWORKING</b>   |  |
| 13.20-13.40 | Eleanor Clarke, Ireland's #1 Spatial Interior Designer, Cobelis Design Studio   | How you can avoid becoming the next renovation fashion victim!   |
| 13.40-14.20 | <b>Moderator:</b> Paul O'Doherty, Journalist & Broadcaster<br><b>Panellists:</b> John Foley, Owner & Director, Lifesize Plans Leinster Team, Dr. Daniel McCrum, Construct Innovate, Dainius Prakapavicius, Managing Director, iDomus Construction | Innovations in Building Design and Construction Techniques       |
| 14.20-14.40 | Audley English MBE, Director, Buldeco Offsite Architecture  | MMC Global Disruptors  |
| 14.40-15.00 | James Cousins, Managing Director & Principal Consultant, Wave Dynamics  | Acoustics and Modern Methods of Construction                     |
| 15.00-15.20 | Dominic Parkinson, Associate Director, Amplitude Acoustics  | Repurposed Buildings for Residential - Acoustic Challenges       |
| 15.20-15.25 | Paul O'Doherty, Journalist & Broadcaster  | Closing Remarks  |



ela[container]



All presentations/timetables are subject to change. Please check with onsite event timetable on the day.



# Building Futures

At CPAC Modular, we recognise the positive impact our modular buildings have on the built environment.

Working to the highest ISO safety and quality standards, our team is fully committed to delivering compliant building solutions to meet the current and future needs of our clients

Using our extensive experience and LEAN principles throughout our business, we create modern sustainable spaces for a variety of use cases.

Bright futures are built in our buildings.

**cpac**<sup>®</sup>  
Modular

**cpac**  
Framing

[www.cpacmodular.com](http://www.cpacmodular.com)



Visit our VR campus on your phone today to experience our Modular Building Solutions

# Data Centres & Critical Infrastructure in Association with Host in Ireland

## Data Centres & Critical Infrastructure in Association with Host in Ireland

| Times       | Name  | Topic   |
|-------------|---|---|
| 9.55-10.00  | Garry Connolly, Founder, Host in Ireland  | Opening Remarks   |
| 10.00-10.30 | <b>Moderator:</b> Dave McAuley, Founder & CEO, Bitpower.ie<br><b>Panellists:</b> Chris Collins, Country President, Schneider Electric, Gary Watson, Country Manager Ireland, Keppel DC & Maurice Mortell, Non Executive Director, Ethos Engineering                                       | Is Ireland Destined to Become a Secondary Data Hosting Location?  |
| 10.30-11.00 | <b>Moderator:</b> Adrian Parry, Hyperscale Sales Manager, EMEA, Commscope<br><b>Panellists:</b> Anthony McDermott, Director, Mitchell McDermott, Vincent Byrne, Data Centre Partner & Consultant Programme Manager, Eaton EMEA & Eoin Dineen, Operations Director, LPI Group              | How big is the Irish Retrofit opportunity?  |
| 11.00-11.20 | <b>COFFEE BREAK &amp; NETWORKING</b>  |   |
| 11.20-11.50 | <b>Moderator:</b> Michelle Wallace, Head of Operations and Community, Host in Ireland<br><b>Panellists:</b> Lisa Duignan, Director, Turner & Townsend, Fergus Barry, Group Head of Human Resources & Associate Director, Kirby & Sean Cavin, Senior Construction Project Manager, Equinix | Talent Gap in Digital Infrastructure  |
| 11.50-12.20 | <b>Moderator:</b> Arthur O'Brien, Managing Director, C+W O'Brien Architects<br><b>Panellists:</b> Peter Lonergan, Associate Director, Ardmac, Tom De Vooght-Johnson, Managing Director, Modulise & Darren Territt, Sales Director Ireland, Anord Mardix                                   | Prefabrication / modularisation: Has it's time finally come?  |
| 12.20-12.40 | Garry Connolly, Founder, Host in Ireland & Aiden Cawley, Business Head for Electrification and Automation, Siemens  | Digitalisation & Decarbonisation, the two of the biggest challenges and opportunities of the current era      |
| 12.40-13.40 | <b>LUNCH &amp; NETWORKING</b>   |   |
| 13.40-14.00 | Lincoln Booth, VP - Corporate Development, Compass Datacenters  | Beyond Dublin: The Factors that Will Shape the Future of Data Center Development Outside of Ireland's Capital |
| 14.00-14.20 | Sharon O'Rourke, Senior Research Executive, Construction Information Services (CIS)   | Bridging the Past and Future: Planning & Construction Volume on Ireland's Data Centre Landscape               |
| 14.20-14.50 | Stephen Proctor, Partner, McCann FitzGerald & Colm Milner, Regional Commercial Director – Data Centres, Sisk  | Navigating Challenges of Procuring and Delivering Data Centres  |
| 14.50-15.10 | Advayta Zadoo, Data Engineer, Oneview Healthcare  | Regulatory Compliance and governance in data management   |
| 15.10-15.15 | TBC   | Closing Remarks   |



In Partnership With



ela[container]



All presentations/timetables are subject to change. Please check with onsite event timetable on the day.

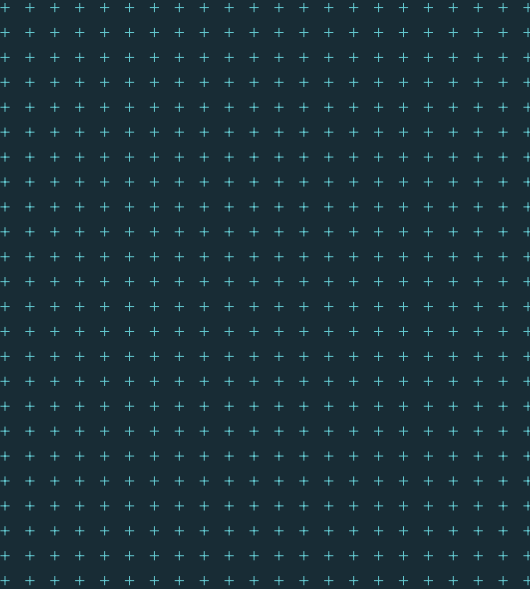


## High quality modular buildings delivered on time and on budget

Come and discuss your upcoming projects with our team of experts. See us outside, or at stand D6 near the main stage!

[portakabin.com](http://portakabin.com)

Porta and Portakabin are registered trademarks. © Portakabin 2024.  
Portakabin Limited, Yorkon House, New Lane, Huntington, York, YO32 9PT.  
Registered company number 685303. 2466/03/24.



# Facilities Maintenance & Management / Health & Safety

## Facilities Maintenance & Management (AM)

| Times       | Name   | Topic   |
|-------------|--|---|
| 9.55-10.00  | Barry Prost, Chair & Co Founder, Rent a Recruiter                      | Opening Remarks   |
| 10.00-10.20 | Barry Prost, Chair & Co Founder, Rent a Recruiter                      | The 6 Key Recruitment Trends Employers in Construction are Adopting in 2024                             |
| 10.20-10.40 | Peter Hamilton, Sales & Specification Manager, Kingspan                | Delivering a sustainable water management strategy with Kingspan Klargester                             |
| 10.40-11.00 | Nathan Ghundoo, Digital Services Business Director, Schneider Electric | Optimising the total cost of ownership for electrical infrastructure                                    |
| 11.00-11.20 | George Harold, CEO, Fexillon   | Standards-led Building Information Management for FM & Operations                                       |
| 11.20-11.40 | Martin Curran, Managing Director, Ermen Systems                        | Safe Continuous Sanitization for all building types   |
| 11.40-12.00 | Peter McCaul, CEO, Exact Comms   | Revolutionizing Facility Management: The Future of Contactless Compliance and Time & Attendance Systems |
| 12.00-12.20 | Aidan Cullinane, NEIS Product Owner, Health Service Executive          | The Importance of structured data to support O&M operations within an IWMS environment. (NEIS)          |
| 12.20-12.40 | Oliver Murray, Matterport Digital Specialist, Hitechiques              | Matterport and Simlab – Making facility manager’s dreams come true                                      |
| 12.40-13.20 | <b>LUNCH &amp; NETWORKING</b>  |   |

## Health & Safety (PM)

|             |   |   |
|-------------|---|---|
| 13.20-13.40 | Damian Donlon, CEO, dulann Ltd  | EHS Software - Building the Business Case for Investment  |
| 13.40-14.00 | Damien O'Connor, Irish Country Manager, International Powered Access Federation | IPAF - Helping contractors to reduce the injuries associated with working at height               |
| 14.00-14.20 | Niamh Bonner, Health & Safety Advisor, Vision Contracting                       | Harnessing technology for improved safety outcomes  |
| 14.20-14.40 | John Kelly, Manager, LOETB National Construction Training Campus                | Health & Safety training within the Construction Sector   |
| 14.40-15.00 | Annette Nash, Managing Director, Theatre at Work                                | Engaging Staff in Safety - The Psychology of Behavioural Safety through Theatre                   |
| 15.00-15.20 | Kieran O' Reilly, CEO & Founder, All Set Workplace                              | Workplace Injuries: Lessons from High Performance Sport Optimising Health to Maximise Performance |
| 15.00-15.05 | Barry Prost, Chair & Co Founder, Rent a Recruiter                               | Closing Remarks   |



NATIONAL  
**CONSTRUCTION  
SUMMIT 2024**

In Partnership  
With



ela[container]



All presentations/timetables are subject to change. Please check with onsite event timetable on the day.



# Temporary room solutions – fast, flexible and easy to install



Mobile room solutions  
[www.ela-container.com](http://www.ela-container.com)

**ela[container]**

# Modern Methods of Construction in Association with MMC Ireland

## Modern Methods of Construction in Association with MMC Ireland

| Times       | Name  | Topic   |
|-------------|---|---|
| 9.55-10.00  | Carol Tallon, Director, Property District   | Opening Remarks   |
| 10.00-10.15 | Mark Whitehead, Construction Director, CPAC Modular   | Modular Student Accommodation   |
| 10.15-10.30 | Stan Admiraal, Application Engineer, SIGA   | Off Site Manufacturing and Temporary Protection   |
| 10.30-10.45 | Colin O'Murray, Head of Commercial, Portakabin  | How a Modular Solution can Help your Business Become More Sustainable   |
| 10.45-11.00 | John Clancy, Account Manager - Ireland, ELA CONTAINER   | Modular Construction and its Multi-Sectoral Benefits  |
| 11.00-11.15 | Donnacha Tobin, Divisional Director, Capcon Engineering   | Designing efficient, sustainable rainwater drainage systems   |
| 11.15-11.30 | Michael Keohane, Director & Head of Development, Framespace   | Modular Metric – The Numbers Around Modular Construction  |
| 11.30-11.55 | Carol Tallon, Director, Property District & Tony McLoughlin, Managing Director of Planning, Design, Manufacturing, and Operations, Glenveagh Fireside   | Fireside Chat with Glenveagh's Tony McLoughlin to talk about the ambitions of NUA Manufacturing to scale housing delivery |
| 11.55-12.40 | <b>LUNCH &amp; NETWORKING</b>   |   |
| 12.40-13.15 | <b>Moderator:</b> Caitriona Bergin, Consultant, Future Cast<br><b>Panellists:</b> Jo Cahalin, Manager - Future Building Skills, Education and Training Boards Ireland, Claire Lundy, Rope Rope Access Technician & Mary Whitney, Director of Education, Future Cast | Women in Construction & Quarrying   |
| 13.15-13.30 | Hugh Whiriskey, Founder & Director, Partel  | Importance of Weather Tightness and Building Protection for Modern Methods of Construction                                |
| 13.30-13.45 | Stephen Grant, BIM Manager, Petruf  | The benefits of implementation of precast concrete systems with the utilizations of 3D modelling and BIM principles       |
| 13.45-14.00 | Richard Kowalski, Technical Director, O'Reilly Precast  | Transforming Construction: O'Reilly Precast's Role in Offsite and MMC   |
| 14.00-14.20 | Anne Daw, Associate & Head of MMC Delivery, HLM Architects & Philip Watson, Director & Head of Design, HLM Architects   | MMC: A Platform for Housing Success   |
| 14.20-14.35 | Christos Michealides, Sales, Falk   | Cradle to Cradle: How FALK can recycle insulated PIR panels   |
| 14.35-14.50 | <b>Fireside Chat:</b><br>Eoin Daly, Managing Director, Procon Modular & Carol Tallon, Director, Property District   | MMC: A rapid response to State Emergency Projects   |
| 14.50-15.05 | Kevin Hickey, Design Manager, BAM/MHI   | MHI (Modern Homes Ireland) – How to incorporate modular construction into your project                                    |
| 15.05-15.20 | Dick Clerkin, Managing Director, Clerkin Consulting   | Building the Future: Navigating Challenges and Risks in Scaling Offsite Manufacturing for Growth                          |
| 15.20-15.25 | Carol Tallon, Director, Property District   | Closing Remarks   |



In Partnership With



ela[container]



All presentations/timetables are subject to change. Please check with onsite event timetable on the day.

NATIONAL  
**MANUFACTURING  
& SUPPLY CHAIN**  
CONFERENCE & EXHIBITION

RDS Simmonscourt, Dublin, May 28<sup>th</sup> & 29<sup>th</sup>



In Partnership With



**Engineering  
Industries Ireland**  
ibec

RDS Simmonscourt, Dublin, May 28<sup>th</sup> & 29<sup>th</sup> 2025

**REGISTER NOW AT [WWW.MANUFACTURINGEVENT.COM](http://WWW.MANUFACTURINGEVENT.COM)**

To Exhibit, Sponsor or Speak, email [colin@prempub.ie](mailto:colin@prempub.ie). Register for free on [www.manufacturingevent.com](http://www.manufacturingevent.com)

 [www.manufacturingevent.com](http://www.manufacturingevent.com)

 Manufacturing & Supply Chain Conference & Exhibition

 @NationalMSC #ManufacturingExpolRE

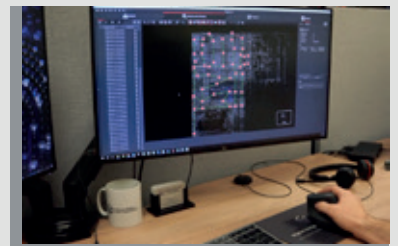


## DIGITAL DESIGN AND CONSULTANCY



### Our Services:

- Point Cloud Surveying
- Fire Protection Design
- Mechanical Design
- Electrical Design
- BIM Services



We are at the National Construction Summit! Visit us at stand A4

E. [Info@digital-design.ie](mailto:Info@digital-design.ie) T. +353 (42) 940 9212

# Project Controls / Construction TECH & BIM

## Project Controls (AM)

| Times       | Name  | Topic  |
|-------------|---|--|
| 9.55-10.00  | Paul Kirwan, Director, GCS Consulting   | Opening Remarks  |
| 10.00-10.20 | Pádraig Neylon, CEO & Founder, +AddJust   | Turning Collected Data into Connected Data   |
| 10.20-10.40 | Ciaran Brennan, CEO, LiveCosts  | Implementing smart technology for procurement and tracking of material expenses  |
| 10.40-11.00 | Christine McLean, President, ACOSTE   | Finding a way through risk management with the help of professional body engagement  |
| 11.00-11.25 | Archie O Donnell, Senior Sustainability Specialist, Kosmos  | KOSMOS manage carbon on projects, by creating an intrinsic link between Cost and Carbon. Through digital classification and interoperability across project data platforms, we track carbon targets and budgets, to reduce uncertainty and enhance credibility. Reporting sustainability objectives through cost metrics |
| 11.25-11.50 | Ciaran Nevin, Senior Manager, Capital Projects & Infrastructure - PwC Ireland   | Are Your Decisions Biased? How cognitive bias affects projects and how to confront it  |
| 11.50-12.20 | <b>Moderator:</b> Paul Kirwan, Director, GCS Consulting<br><b>Panellists:</b> Ross Griffin, Founder, Kosmos, Gillian Hegarty, Senior Manager, Capital Projects & Infrastructure, PwC Ireland & Craig Owens, Director, Turner and Townsend | Exploring the role of Project Controls in delivering the Project Ireland 2040 Major Infrastructure Project Pipeline. What will be the role of Project Controls in ESG reporting and disclosures?   |
| 12.20-12.40 | <b>LUNCH &amp; NETWORKING</b>   |  |

## Construction TECH & BIM (PM)

|             |   |   |
|-------------|---|---|
| 12.40-13.00 | Tina Calder, Chief Vision Officer, Excalibur Press                    | Using AI To Supercharge Your Construction Firm's Marketing Efforts  |
| 13.00-13.20 | Sean O'Dwyer, AEC Division Manager, Symetri Europe                    | Mastering Digital Efficiency in Construction  |
| 13.20-13.40 | Tamas Borodi, Regional Sales Manager, UK/IE, OpenSpace                | Unlock the Power of BIM in the Field  |
| 13.40-14.00 | Jonathan Rogers, BIM Manager, Covolve                                 | Digital Project Delivery: A manufacturer's approach to implementing BIM processes and standards on a global scale |
| 14.00-14.20 | Dr. Alan Hore, Co-Founder & Director, Construction IT Alliance (CitA) | CitA: How we can support your Digital Journey Today   |
| 14.20-14.40 | Rodney Dass, Operations Manager, Tantek 4D                            | 360° Insight: Lifecycles, Asset Digital Capture, and Sensor Integration in Digital Twins                          |
| 14.40-15.00 | Neil Cronin, Associate Director - Project Management, Arcadis         | Understanding Generative AI in Construction   |
| 15.00-15.20 | Jarek Woznica, Managing Director, GRIP Software Solutions             | Digital Transformation Case Study: Streamlining Quality Control in Road Construction                              |
| 15.20-15.25 | Tina Calder, Chief Vision Officer, Excalibur Press                    | Closing Remarks   |



NATIONAL  
**CONSTRUCTION  
SUMMIT 2024**

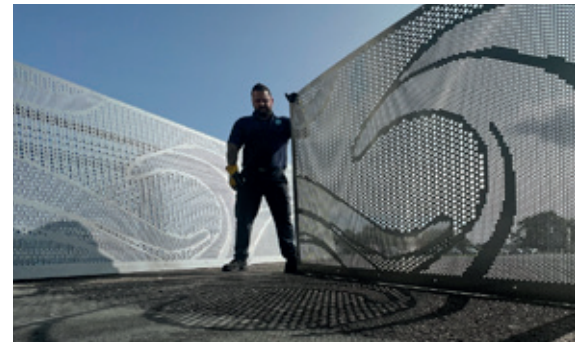
In Partnership  
With



ela[container]



All presentations/timetables are subject to change. Please check with onsite event timetable on the day.



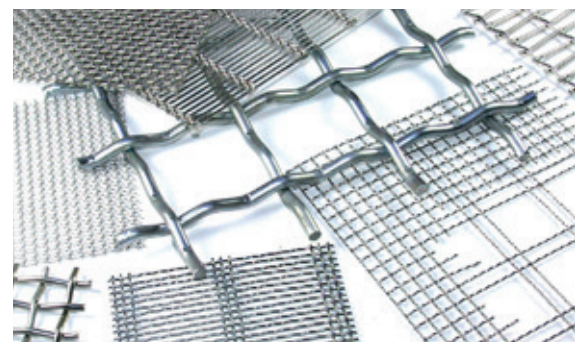
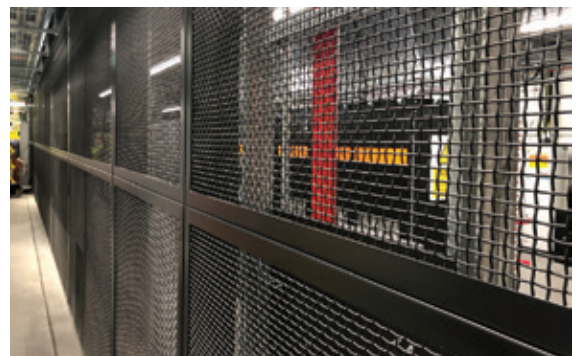
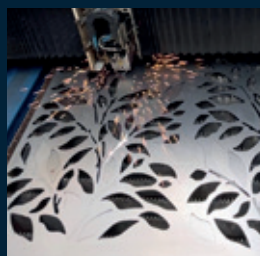
## Manufacturers of Engineered Metal

Discover Graepels, Your Partner for Quality Metal Solutions.  
Manufacturers of Engineered Metal Products Since 1959.



Visit us at **Stand 152**  
Find us on Social: **@Graepels**

Perforated Metal | Woven Wire | Laser Cutting | Fabrication



Sales@Graepels.com **Ire:** +353 21 477 2105 **UK:** +44 1925 229809

# Smart, Green & Passive Construction and NZEB

## Smart, Green & Passive Construction and NZEB

| Times       | Name  | Topic  |
|-------------|---|--|
| 9.55-10.00  | Padraig Boland, FET Manager, Strategic Projects, Laois and Offaly Education and Training Board  | Opening Remarks  |
| 10.00-10.20 | Pamela Sheridan, Operations Manager, Supply Chain Sustainability School – Ireland & Rick Dunn, Business Development Manager, Supply Chain Sustainability School – Ireland   | Fostering Sustainability in the Construction Industry: Insights from the Supply Chain Sustainability School  |
| 10.20-10.40 | Stephen Prendiville, Partner, Sustainable Infrastructure Leader, Deloitte   | "Infrastructure for Good" - the new standard for infrastructure planning and delivery  |
| 10.40-11.00 | Graham Murray, Director of Projects Ireland, Schneider Electric   | The Fastest Path to Net Zero   |
| 11.00-11.10 | <b>COFFEE BREAK &amp; NETWORKING</b>  |  |
| 11.10-11.40 | <b>Fireside Chat:</b><br>Laurence Downs, Sales Director at Failte Solar & Gearoid Whelan, Managing Director, JFW Renewables   | Solar Solutions – Maximising the integration of Solar Energy into Commercial & Residential Building Projects   |
| 11.40-12.00 | Darren Kinsella, Business Development for New Energy Landscapes, Schneider Electric   | How to gain Resilience & Independence with your Energy Transition  |
| 12.00-12.20 | Dora Rebola, Senior Sustainability Manager and Architect, ONE for ALL   | BREEAM and Climate Change Resilience   |
| 12.20-12.40 | Mike Teahan, Technical Director, PhaseStor  | Thermal Energy Solutions   |
| 12.40-13.20 | <b>LUNCH &amp; NETWORKING</b>   |  |
| 13.20-14.00 | <b>Moderator:</b> Lara Oyedele, CEO, Lara Homes Ltd & Black on Board Ltd<br><b>Panellists:</b> Darren Kinsella, Business Development for New Energy Landscapes, Schneider Electric, Angela Murphy, Design Director, AM Design, Bartłomiej Przygodzki, Business Development Manager, Northern-Markets, Modular System & Radosław Krzemiński, Head of Constructors, System 3E | Sustainable Buildings: Designing for a Greener Future  |
| 14.00-14.20 | Marek Zabrzycki, Business Development Manager, Sendom Domy Drewniane  | House in 8 Hours   |
| 14.20-14.40 | Michael Girvan, Sustainability Manager, Mivan   | The importance of data in the decarbonisation of the construction sector   |
| 14.40-15.00 | Dainius Prakapavicius, Managing Director, iDomus Construction   | Engineered Timber building method for Irish Domestic Construction Market   |
| 15.00-15.20 | Dermot Kelly, Technical Director - Ground Improvement, Powerbetter Developments Limited   | Ground Improvement using Rapid Impact Compaction (RIC-9T), Polygon Compaction Roller (PCR-26T) and Soil Improvement / Modification (SIM-Lime/Cement – Soil Stabilisation) Techniques with Digital Monitoring |
| 15.20-15.25 | Padraig Boland, FET Manager, Strategic Projects, Laois and Offaly Education and Training Board  | Closing Remarks  |



NATIONAL  
**CONSTRUCTION  
SUMMIT 2024**

In Partnership  
With



ela[container]



All presentations/timetables are subject to change. Please check with onsite event timetable on the day.



# Explore the Future of Construction with Polish Innovation

Discover how Modern Methods of Construction (MMC) offer a promising solution to housing market challenges. By leveraging factory settings, MMC streamlines construction, allowing for faster completion of units through prefabricated components, reducing carbon emissions associated with traditional on-site construction.

Explore cutting-edge innovations at our **stand I18**. Engage with industry leaders and explore pioneering technologies from our exhibitors: Multicomfort, Modular System, Sendom, Qmodular, Pekabex, Woodcore House, SYSTEM 3E and ALEHALE.

Connect with the Polish Investment & Trade Agency (PAIH) to find the best suppliers and partners from Poland. Contact us for advice on sourcing products and services from Poland, exploring investment opportunities, and navigating the Polish market.

[www.paih.gov.pl/en/](http://www.paih.gov.pl/en/); e:mail: [joanna.kobalczyk@paih.gov.pl](mailto:joanna.kobalczyk@paih.gov.pl)



# MODERN HOMES IRELAND

3D Volumetric Modular Manufacturer

MHI constructs quality assured steel-framed homes and commercial buildings within a precision-controlled factory environment. Our 10 story NSAI certified volumetric modular system delivers units to site up-to 95 per cent complete. MHI was established in 2016 and since then remains the only NSAI certified volumetric modular provider in Ireland.

We have successfully delivered over 1800 units across the UK and Ireland Construction sector. Our portfolio includes a combination of various commercial developments, social and affordable and high-end residential housing. Based in Ballyjamesduff, our modern facility has the capacity to produce more than 400 units annually. MHI has a unique and immediate offering and has a proven track record of delivering precision engineered, high quality and sustainable volumetric modular solutions for our many clients.

Talk to us at Stand I44 for more details.



## MHI OFFER:

- Residential (Housing/Apartments)
- Commercial, Education & Hotels sectors
- Bathroom Pods
- Steel Frame Systems
- Structural Wall Systems
- Lattice Roof Trusses
- Design Consultancy

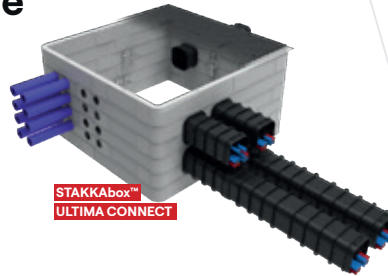
A82 XE35  
049 4310140  
Sharon Lynch or Kevin Hickey  
www.mhi.com  
info@mhi.ie



# THE *LEADING* PARTNER OF INNOVATIVE AND SUSTAINABLE INFRASTRUCTURE *SOLUTIONS* >>>



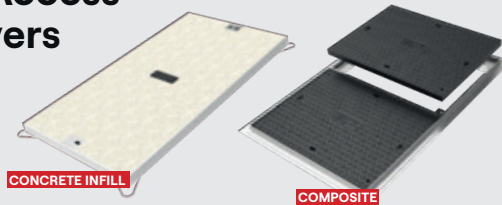
**Sustainable  
Network  
Access  
Solutions**



**ENERGY**



**Versatile Range  
of Access  
Covers**



**RAIL**



**Underground Multiple  
Duct *Cable Protection*  
System**



**WATER**



**Want to *know more?***

Reach out to one of the **team**  
by **scanning here:**



**TELECOMS**



Telephone: +44 (0)28 38 313 100  
Email: [info@cubis-systems.com](mailto:info@cubis-systems.com)  
[www.cubis-systems.com](http://www.cubis-systems.com)

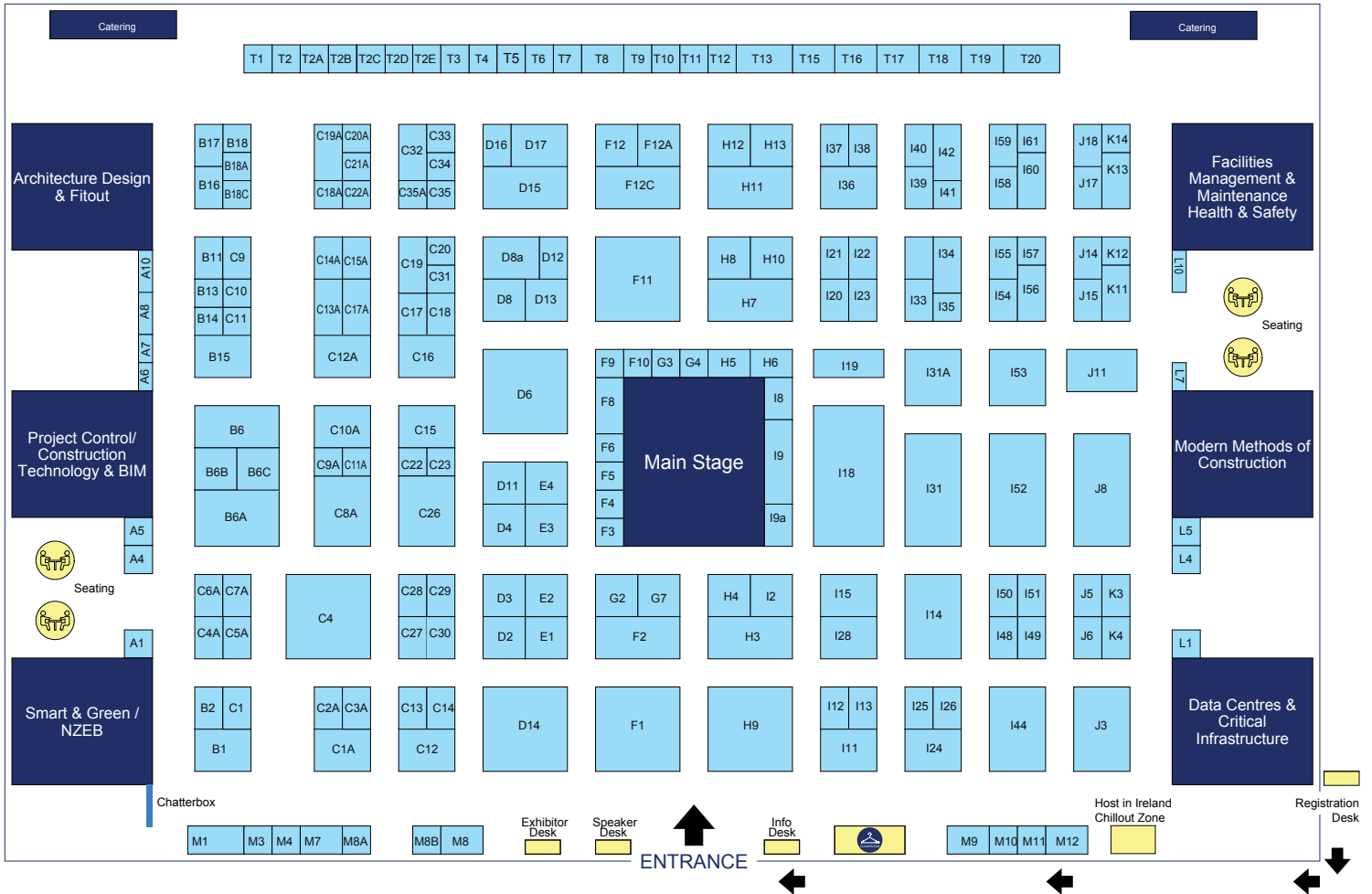


# National Construction Summit 2024 - Floor Plan



## NATIONAL CONSTRUCTION SUMMIT 2024

In Partnership With



# National Construction Summit 2024 - Exhibitor Index

## Exhibitor Index

|                                    |      |                                    |      |                                    |      |                                   |      |
|------------------------------------|------|------------------------------------|------|------------------------------------|------|-----------------------------------|------|
| 3:rock                             | C19A | Digital Design and Consultancy Ltd | A04  | Kingspan                           | H09  | Salto Systems Limited             | B15  |
| A.f.t Blinds                       | C19  | Digital Doors                      | C29  | Kytun                              | F12  | Samsung                           | C01A |
| ACO TECHNOLOGIES plc               | I20  | Drivalia                           | F04  | Law Society                        | C18A | Schluter-Systems                  | F09  |
| Adfil Ltd                          | I48  | Dublin Chamber of Commerce         | T10  | Levelling Equipment Services       | B02  | Secora Consulting                 | M12  |
| Adrey Engineers                    | L01  | dulann                             | C30  | Life Credit Union                  | C22A | Securitas                         | I36  |
| Advanced Manufacturing Training    |      | DUOL Ireland                       | D13  | Liquid Rubber World                | K14  | SES Water Management              | M01  |
| Centre of Excellence               | B06A | Ecodepo                            | I61  | LiveCosts                          | D08  | Sigma Wireless                    | I50  |
| Advanced Safety                    | I55  | Eire drone services                | F06  | Macmarts                           | C18  | Simplicity Group                  | I24  |
| Aerobarrier                        | I32  | EJ Co                              | D17  | Manhole Covers Ireland Ltd         | B01  | SmartOffice                       | C02A |
| Albatel                            | T02  | ELA Container                      | H07  | MarineServices.ie                  | T01  | Snickers Workwear                 | I02  |
| Alexander Boyd                     | B14  | Elevator Data Solutions            | C03A | Media Print                        | C07A | Solgrid                           | C13A |
| All About Trees                    | C35  | Elite Woodworking Machinery        | C23  | MH International                   | C14  | Sprint Digital                    | C31  |
| Allied.ie and Vitrintec            | F11  | Eliteform Manufacturing            | M09  | MHI                                | I44  | St. Andrews                       | H11  |
| Alupress Limited                   | H13  | Enerpower                          | C22  | Midsummer Renewables               | I14  | Stacked                           | C17A |
| Ampack                             | I51  | ERS IT Solutions                   | G07  | Mount Lucas                        | H08  | Start Solar                       | H12  |
| Amvic Ireland                      | H06  | Everlux                            | B18C | Moveover                           | M03  | Steel Lintels Ireland             | F10  |
| Anchor Bay Construction            |      | Excel Recruitment                  | C35A | MyRemote iot                       | M07  | STIRA – Folding Attic Stairs Ltd. | B16  |
| Accessories                        | C11A | Failte Solar                       | I31  | NiftiBusiness                      | I19  | SustainIQ                         | C05A |
| Arantico                           | A10  | Falk Ireland Ltd                   | I31A | Norspace Hire                      | F05  | Symetri                           | D08A |
| Arch-1                             | I13  | Fantasy Lights Group               | K13  | Not One Iota                       | K12  | Synergie Futureproofing Solutions | M08  |
| Armatherm Thermal Bridging         |      | FIELDWIRE by HILTI                 | C06A | Nouveau Design Management          | B17  | Text Tell Ltd                     | A08  |
| Solutions                          | F02  | Fire Protection Specialist         | I37  | NSAI                               | I41  | Thermal Break Plates              | C14A |
| Ashview Consultants                | B13  | FIRST BASE Ground Screws           | B06C | O'Brien Facilities                 | I58  | Thorntons Recycling               | I12  |
| Association for Project Management |      | Flanagan Fittings                  | D14  | O'Reilly Training                  | T15  | Timeworks                         | I22  |
| C27                                |      | Fragomen                           | C10  | OBW Technologies                   | C04A | Total Air Solutions               | J05  |
| Avantgard Agents                   | F08  | FutureCast                         | D04  | OD3 BIM                            | F04  | Total Materials Handling          | I38  |
| B-Fluid Ltd                        | D12  | Gahan and Long                     | K03  | Open Space                         | I11  | Trench Control Ltd                | H05  |
| BAM                                | J06  | Gaia Smart Energy                  | E02  | OSSM                               | I23  | TSG Ireland                       | I26  |
| Bath Fitter                        | H03  | Galco Steel Ltd                    | F12C | Ovia                               | D15  | TU Dublin Innovation              | B06B |
| Beeswift Ltd                       | I08  | GARO Electric Limited              | J15  | Oxford Professional Education      |      | Universal Graphics                | B11  |
| Blue Chair Broker                  | L10  | GEV Technologies                   | C28  | Group                              | M04  | University of Limerick            | C20A |
| Boss Cabins                        | J11  | Glin National College              | T18  | Peninsula                          | I09A | Urban Metal Design                | T02A |
| Box on Box                         | L07  | Graepels                           | I52  | PERI Ireland                       | C13  | Valsir from Kernohan Distribution | C09  |
| BRE                                | B18A | Harkess Electrical Wholesalers     | M08B | Pipeline Ireland Limited           | C32  | Vision Built                      | B06  |
| Buronomic                          | C15  | Head-Wind                          | G04  | Pittman®                           | I56  | VRP (Wireless Fire Detection)     | H04  |
| Cali Training Rigs                 | I57  | Health & Safety Authority          | I35  | PMAC                               | M10  | Wavin Ireland Ltd                 | C11  |
| Celuplast                          | C21A | Hercules Building Systems          | L05  | Polish Investment & Trade Agency   | I18  | Weev                              | H10  |
| CEMS Environmental & Process       |      | Howden Insurance                   | C33  | Portakabin Limited                 | D06  | Whitty Security & Fire            | J17  |
| Controls Ltd                       | E04  | hrc-europe                         | A05  | Power Washing Ireland              | I09  | Workplace Relations Commission    | I33  |
| Certa                              | C10A | Hunter Marshall Remote             |      | Precision-um                       | F12A | WWETB                             | D03  |
| CIAT                               | A07  | Recruitment                        | J18  | PREM Hospitality                   | C20  | YB Fixings Ltd                    | C16  |
| Coatek                             | J14  | Hybrid Technology Partners         | C17  | Priority Metrix                    | C01  |                                   |      |
| Connemara Wine and Design          |      | iDomus Construction                | F03  | Procon Modular                     | I53  |                                   |      |
| Gifting                            | C15A | IMI                                | C09A | Proflo Ltd                         | I28  |                                   |      |
| Containex                          | C04  | In Granite Recon Ltd               | E03  | Prolift Handling Ltd               | C08A |                                   |      |
| Conway TV & Broadband              | D11  | IPAF - International Powered       |      | Quadra Ltd                         | I34  |                                   |      |
| Coolmine                           | T06  | Access Federation                  | I54  | Quality Direct Supplies Ltd        | M11  |                                   |      |
| Corporate Enforcement Authority    | C34  | IPL Group                          | D02  | Quality Freight                    | D16  |                                   |      |
| CPAC Modular                       | J08  | Irish Wire                         | I42  | Remagin                            | J03  |                                   |      |
| CPAS – CIF Pension Administration  |      | Kavanagh Security                  | K11  | Ripple Creative Ltd                | B18  |                                   |      |
| Services                           | G03  | KDM Hire                           | C26  | Rotho Blaas                        | E01  |                                   |      |
| Creagh Concrete Products Ltd       | C12  | Kelly Bros International           | G02  | S-connect                          | L04  |                                   |      |
| Crown Curtain Tracks               | I25  | Kemwell Fire International Ltd     | I59  | Safeguard Systems                  | K04  |                                   |      |
| CUBIC-Modulsystem A/S              | I15  | Key Plastics                       | I39  | Safetech Consulting & Training Ltd | C12A |                                   |      |
| Cubis Systems                      | F01  | KeyGreen                           | A01  | Safety Jogger Works                | T20  |                                   |      |
| Cupix                              | I49  | Keypoint                           | I60  | Safety Solutions Group             | T19  |                                   |      |

**External displays**  
 Portakabin Limited  
 ELA Container  
 MHI





# BETTER BUILDINGS FOR A BETTER WORLD

Kingspan is the global leader in high-performance insulation and building envelope solutions.



[kingspan.com](https://kingspan.com)

